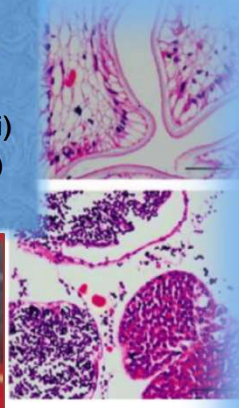


Aquaculture sector is among the fastest and rapidly growing industry. Crustacean and Fish disease being a huge concern to fisheries production that capable to deplete the sustainability of global aquaculture yield.

BIO SYNERGY LABORATORIES now offers a wide range of effective tests and services in detection of aquatic diseases and toxins.

Crustacean Disease

- WSSV (White spot syndrome)
- YHV (Yellow-Head)
- IMNV (Infection with infectious myonecrosis)
- IHNV (Infectious hypodermal and haematopoietic necrosis)
- TSV (Taura syndrome)
- AHPND / EMS (Acute hepatopancreatic necrosis disease)
- CMNV (Covert mortality nodavirus)
- MBV (Monodon baculovirus)
- EHP (Enterocytozoon hepatopenaei)
- HPV (Hepatopancreatic parvovirus)
- DIV1/SHIV (Decapod Iridescent)



Fish Disease

- IRIDOVIRUS
- VNN (Betanodavirus or nervous necrosis)
- SVCV (Spring Viremia of Carp)
- TiLV (Tilapia lake)



Natural toxin poisoning

- PSP (Paralytic shellfish poisoning)
- NSP (Neurotoxic shellfish poisoning)
- ASP (Amnesic shellfish poisoning)
- DSP (Diarrhetic shellfish poisoning)

